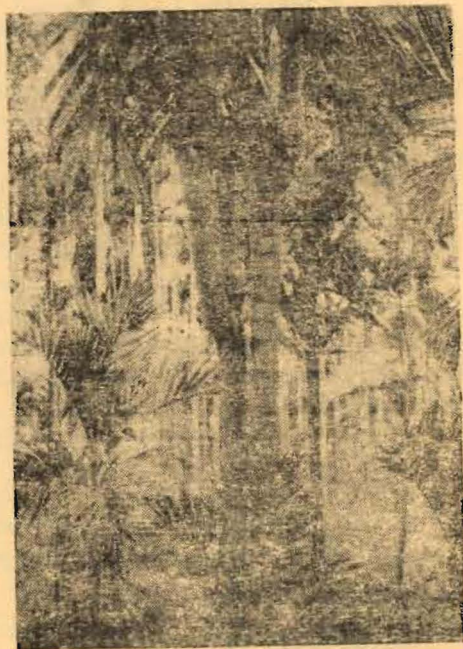


ARECA PALM WITH THIRTEEN CROWN

By
C. A. THOMAS

The interesting areca palm (Supari) having thirteen crowns (vide plate) was found growing at Kurichi, Kottayam District, Kerala State. At the time of observation the palm was 25-30 years old. When this photograph was taken in 1961, thirteen branches were counted on the palm. In this abnormal palm, the branching of the main stem began when it reached a height of about 24 feet. About a year before the branching commenced, the tree appeared to have under-gone a serious set-back in growth as evidenced from the tapering of the stem permanently visible at the top region. But with better conditions, the stem soon started sprouting several branches, most of them growing along the same vertical plane.



On enquiry it was learnt that before branching the palm was bearing normally. After the formation of these branches, the bearing was so poor. At the time of recording, four branches were bearing inflorescence, none of them capable of bearing

nuts. The size and growth of leaf are quite normal. Similar branched arecanut palm have been reported by several workers. Davis (1956) had reported an areca palm producing twenty six branches.